



Rijkswaterstaat
Ministry of Infrastructure
and Water Management

More sand off the coast of Ameland



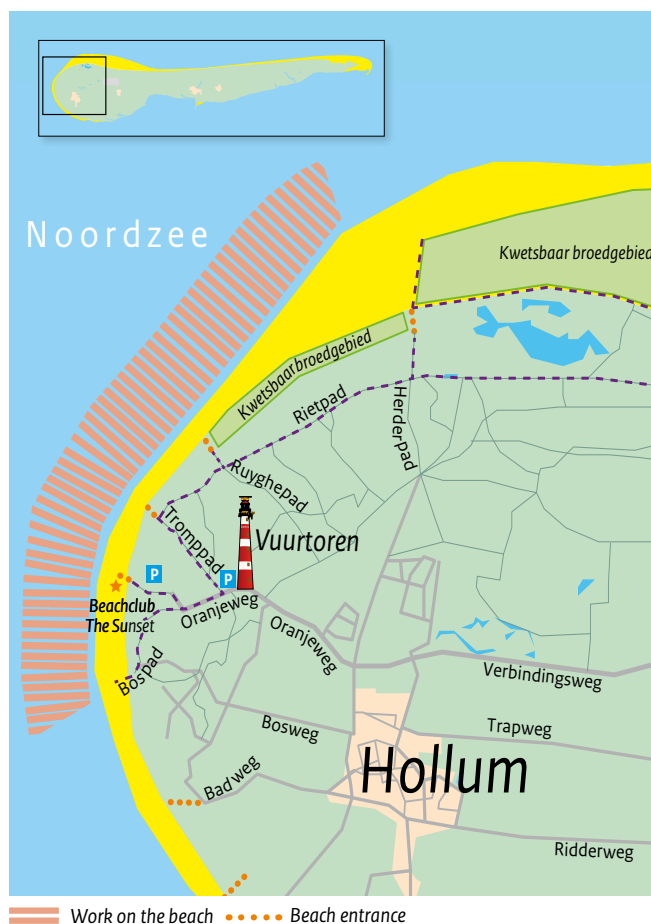
From April to September 2025, Rijkswaterstaat will be conducting coastal maintenance on the beach at West Ameland (around Hollum). We will be adding more sand to the beach between beach poles 1 and 4. In 2025-2026, we will also be adding sand to the seabed at East Ameland. This sand will be used to keep the island's coast intact.

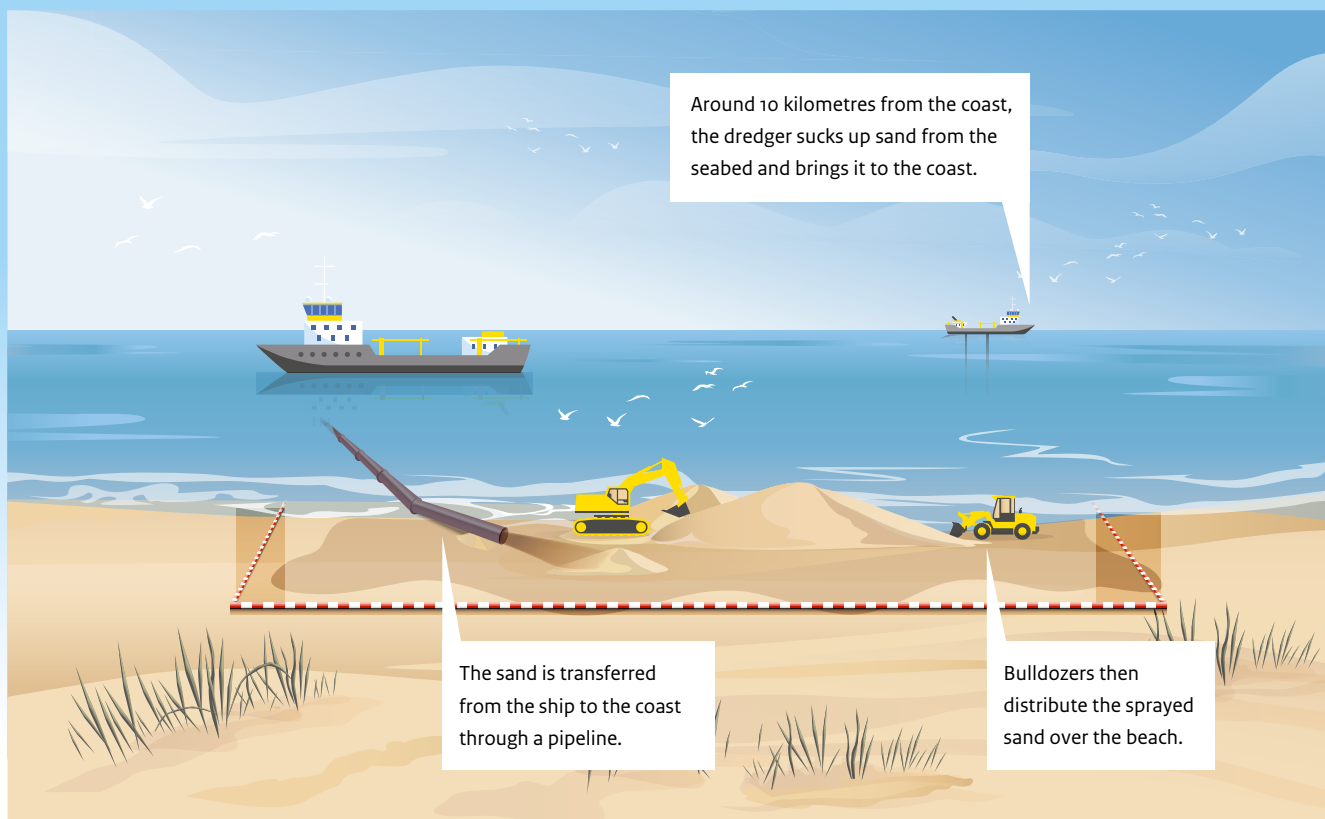
Work in West-Ameland

- Where** On the beach at West Ameland, around Hollum, between beach poles 1 and 4
- What** About 2 million cubic metres of sand from the North Sea, also 450.000 cubic metres of sand from a channel for the dredger.
- When** From April to September 2025, 7 days a week, 24 hours a day

Please note!

- The work site has been cordoned off; you are not allowed to pass the barriers. This is a dangerous site; heavy-duty machines are operating here and there is a risk of quicksand.
- Please do not pass the work site along the water, but on the dune side.
- Keep your dogs on a lead.
- Equestrians: keep your distance from the work site.
- Swimming is prohibited at the work site.
- Water sports enthusiasts: stay at least 300 metres away from the dredger. Do not sail between the vessel and the beach because the pressure pipe is located here.



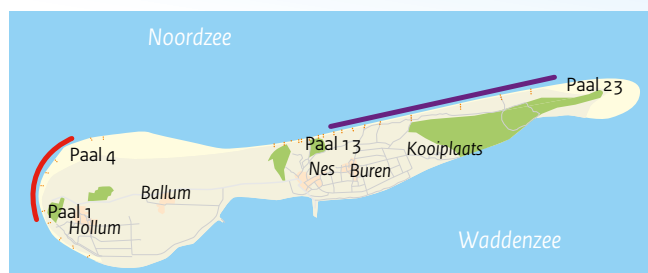


Why is this maintenance needed?

The beach and the dunes provide vital protection against the sea. The coast on Ameland is eroding as wind, waves and currents wear down and carry away the sand. Rijkswaterstaat therefore regularly replenishes the coast here with sand from the North Sea to keep the coastline intact. This keeps Ameland protected from the sea.

Taking nature into account

During coastal maintenance work, Rijkswaterstaat does everything it can to protect nature. For example, during the work we keep our distance from nesting birds to avoid disturbing them. And in the interest of nature, the replenishment sand that is used resembles the sand of the beach as much as possible. This sand comes from the bottom of the North Sea, more than 10 kilometres from the coast.



— Foreshore work

— Beach work operations

What is happening on West Ameland beach?

Using special dredgers ('trailing suction hopper dredgers'), we are conveying about 2 million cubic metres of sand to the beach. An additional 450,000 cubic metres of sand is being added, which has been dredged up to help bring it to the coast. From the beach, the sand can then drift into the dunes. This extra sand will keep the dunes wide and strong.

Under the water at East Ameland

In 2025–2026, 3 million cubic metres of sand will be deposited on the seabed off East Ameland. In the months following, this sand can move naturally with the waves towards the beach.

We are adding almost 5 million cubic metres of sand on and off the Ameland coast. This is 2,750 times Ameland's lighthouse full of sand.



More information?

Visit www.rijkswaterstaat.nl/kustonderhoud.
Or call 0800 8002.

Published by Rijkswaterstaat
www.rijkswaterstaat.nl | 0800-8002
April 2025 | 0125ZB2504

